



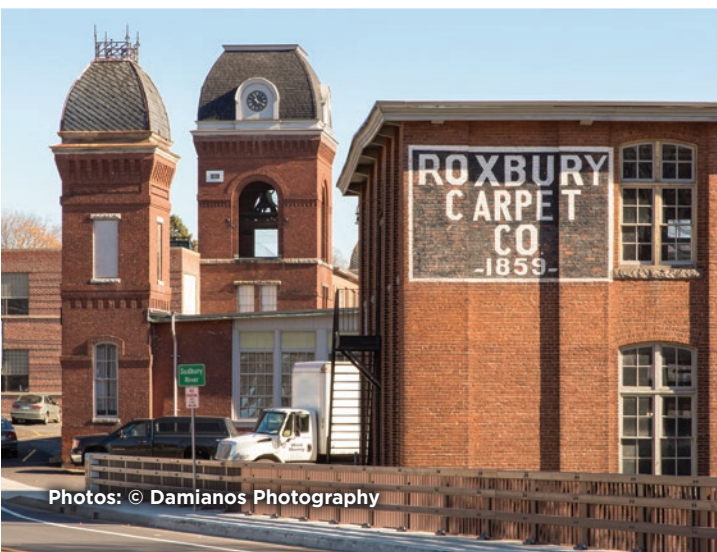
Saxonville Mills **OPEN STUDIOS**

April 7+8, 2018 | 12–5:00 pm

The artists and creative business owners of the Saxonville Mills cordially invite you to explore their creative businesses and view their artists' work.

- **The Artists of Saxonville Studios**
- **Past Prezence**
- **Friends of Saxonville**
- **Framingham MakerSpace**
- **Fireseed Arts**
- **The Mill Contemporary Art Studios & Gallery**
- **Red 13 Studios**
- **Damianos Photography & Publishing**
- **The Potting Shed, Inc.**
- **Acorn Editions**
- **A Street Frames**
- **Framed In Time**
- **Better Standing Company**
- **Ever DesignWorks**

Families and children are welcome.



Photos: © Damianos Photography

Learn more: www.facebook.com/saxonvillemills

Saxonville Mills **OPEN STUDIOS**

April 7+8, 2018 | 12-5:00 pm
1 WATSON PLACE, FRAMINGHAM

LEARN MORE:

www.facebook.com/saxonvillemills



DIRECTIONS to Saxonville Mills | 1 Watson Place, Framingham, Massachusetts

From the South:

1. Take Rte. 128 to Rte. 9 west.
2. In 9.4+ miles, turn right onto Rte. 126 North (Concord St.) Cross Rte. 30 at lights.
3. Continue straight thru next set of lights, staying on Concord St. (Rte. 126) for another 1.43 miles and turn left onto Watson Pl. at blinking yellow light.
4. Drive to parking lot at end.

From the East or West:

1. Take Mass. Pike to Framingham exit 13.
2. Take Rte. 30 west toward Framingham and Shoppers World.
3. Turn right onto Rte. 126 north (Concord St.)
4. Continue from step 3 above.

From the North:

1. Take Rte. 128 to Rte. 20 west.
2. After crossing into Sudbury, take the first left onto Landham Rd.
3. Landham Rd. turns into Elm St. in Framingham. Continue thru 2 sets of lights.
4. Turn right on Watson Place at blinking yellow light.
5. Drive to parking lot at end.